



Compassion. Care. Excellence.

Impact Report **2023**



In 2023, the Hillel Lodge continued to be a beacon of hope and compassion, driven by the support of our dedicated donors, volunteers, and staff. Together, we have launched innovative programs, strengthened our community connections, and fostered an environment where dignity and respect are paramount.

This report showcases the inspiring stories and accomplishments that have defined our year. From our exciting new Dream Garden, enhancing our Meal Assistance Program to expanding our Companionship Connections initiative, we have focused on combating loneliness and isolation among our residents, ensuring they are not just cared for but truly cherished.

As you explore the pages of this report, you will read about the lives we have touched, the milestones we have achieved, and the gratitude we hold for each and every one of our supporters. Your generosity empowers us to dream bigger and act bolder, creating a lasting impact on the lives of those we serve.

Thank you for being an integral part of our journey. Together, we are building a stronger, more connected community for all.

TABLE OF CONTENTS

02/ Farewell message from President of Hillel Lodge LTC Foundation **03/** Farewell message President of Board Hillel Lodge **04/** Message from Executive Director of Hillel Lodge LTC Foundation **05/** Message from CEO of Hillel Lodge **06/** The Auxiliary **07/08/** Awards Winners **09/** Resident Spotlight **10/** Financial Snapshot 2023 **11/12/13/14** 2023 Highlights **15/16/17** Endowment Funds **18/** Ways of Giving

FAREWELL MESSAGE

With deep gratitude and profound humility, my term as President of the Hillel Lodge LTC Foundation has come to an end. Reflecting on my tenure, I am immensely appreciative for the unwavering support and dedication of my fellow board members. Your wisdom, guidance, and steadfast commitment have been instrumental to our success. Together, we have faced challenges head-on and celebrated achievements.

I extend my heartfelt indebtedness to the exceptional staff members who worked tirelessly to provide exceptional care and support to the residents. Their unwavering dedication and compassion are the lifeblood of our organization, and I am forever thankful for their efforts to improve the well-being and happiness of our residents.

Under our collective stewardship, the endowment fund has grown because of the trust and confidence our community has placed in us. This growth will ensure the long-term viability and sustainability of the Lodge.

Biking for Bubbies has thrived and continues to be the largest event in our city in support of Long-term Care. We have celebrated significant milestones, including the realization of the Dream Garden, a sanctuary of joy and healing. We made essential facility upgrades, including the replacement of the resident care lifts. The Recreation Therapy space was modernized, replacing the old equipment with new. These projects exemplify our unwavering commitment to honouring those that paved the path before us, while providing residents with comfort and dignity.

These accomplishments would not have been possible without the dedication and assistance of so many volunteers, sponsors, and the broader community. Together, we have contributed to a remarkable legacy that will continue to touch the lives of countless individuals and their families for generations to come.

My sincerest gratitude goes to my wife and family for their unwavering support and understanding throughout my tenure. Their love and encouragement have guided me, allowing me to focus and fulfill my duties.

As I pass the baton to our incoming President, David Baker, I have the highest confidence in his leadership to continue towards the vision we have built. David's experience, passion and dedication to our community will steer the Hillel Lodge LTC Foundation toward a bright future. I will continue to serve as Past President and Chair of the Life and Legacy Committee and the Investment Committee, ensuring a seamless transition.

To each board member, staff member, volunteer, and supporter, I express my heartfelt appreciation for your unwavering commitment towards the pursuit of our objectives. We have achieved so much through our collective efforts, and I look forward to seeing what the next chapter holds.

"Contributing to a remarkable legacy"



FAREWELL MESSAGE

It has been my great honour to have served as President of the Bess and Moe Greenberg Family Hillel Lodge Long-Term Care Home of Ottawa for the past two years.

I am most grateful to my fellow Board members and Executive for their support and insights. I also have gained a deep appreciation for the work done by the Hillel Lodge Auxiliary and the critical contributions made year after year by the Hillel Lodge Long-Term Care Foundation. I would also like to acknowledge the valuable ongoing support of the Jewish Federation of Ottawa and the Ottawa Jewish Community Foundation.

Without everyone's dedication, the Lodge simply could not be the model residence that is so highly regarded in the community.

Supporting the Lodge through the pandemic was no small feat, and much was learned in the process. Opportunities for improvements were identified and a specific strategic plan was put in place that will: develop and maintain Hillel Lodge as a centre of excellence; create an environment in which our managers and staff can excel; give confidence to our residents that all their needs are met; and comfort families in the knowledge that their family members are being well cared for.

"The solid foundation of compassion and caring for which Hillel Lodge is known will serve us well as we proceed with renewal and growth."



THE BESS AND MOE GREENBERG FAMILY

Hillel Lodge
LONG-TERM CARE HOME OF OTTAWA

Marty Black
President



REFLECTING ON A YEAR OF COMPASSION AND GRATITUDE

As we reflect on another remarkable year, I want to express my gratitude for the unwavering support and dedication to the Hillel Lodge Long Term Care Foundation. The generosity and commitment of caring people allows us to continue to provide exceptional care and support in a caring Jewish environment. THANK YOU!

Before we delve into the achievements of this year, it is with a heavy heart that we remember those who have left us too soon. We are humbled and grateful for the individuals who had the foresight to include the Lodge in their wills, ensuring that their impact on the lives of others endures. Their selflessness serves as a testament to the compassion and kindness that resides within our community. Thank you—your light lives on in the hearts of those who call Hillel Lodge home.

I would also like to recognize the invaluable contributions of the Hillel Lodge LTC Foundation Board of Directors, the Bess and Moe Greenberg Family Hillel Lodge Board of Directors and the Hillel Lodge Auxiliary. Their dedication, guidance, and commitment is humbling. I am proud and blessed to work with each and every one of them. They give of their time, talents, and treasures. These are busy people with busy lives and caring hearts.

Hillel Lodge would be nothing without our exceptional, caring staff. Every day, I witness them going “above and beyond” to ensure our residents' physical, emotional, and spiritual well-being. We would be a hollow building without them. THANK YOU!

“Society is great
when people plant
trees – whose shade
they will not know.”

2023 marked the 15th remarkable year for Biking for Bubbies. This extraordinary event brings the community together for a fantastic day. Every biker, walker, sponsor, cheerleader, and volunteer should be thanked for making this event such a success. Thanks to their incredible support, we have funds to support the Mealtime Assistance and Companionship Connections Programs that helps combat loneliness for some of the most isolated residents. From those who participated in the Family Fun Zone, to those who sponsored a biker, or biked themselves and our sponsors – each of them is changing the world for those living at the lodge. THANK YOU!

The new Dream Garden is a space that will bring joy and tranquillity to our residents, creating a serene space for reflection, connection, and solace. For some, it is their only access to the outdoors. The group of committed community members who stepped forward to make this dream a reality should be proud of the knowledge that they are enhancing the lives of people living at the Lodge.

In honor of their sister, a family helped create a beautiful Therapeutic Room. This therapeutic space is a testament to the transformative power of love and remembrance.

Together, we have touched lives, uplifted spirits, and made a tangible difference. I extend my appreciation to everyone who helped make this year a success. Let us continue to work hand in hand to create a brighter future for our residents and ensure that the flame of hope burns eternally within these walls.



A COMMITMENT TO EXCELLENCE AND COMPASSIONATE CARE

The Bess and Moe Greenberg Family Hillel Lodge of Ottawa boasts a proud legacy of providing exceptional care to residents, recognized throughout Ontario for our high standards. Since joining the team five years ago, I have been profoundly moved by the dedication our staff shows towards our residents, a testament to our core values of empathy and quality care. None of our accomplishments would be possible without the dedication of our Board of Directors, volunteers, and the generosity of our donors.

As we navigate a pivotal time in long-term care, the demographic shift in our residents has become evident. Historically, residents typically had general care needs. Today, however, our residents are often in their late 80s to 90s, grappling with multiple health issues, particularly dementia. This trend is mirrored nationwide, with projections suggesting the number of Canadians with dementia could reach 1.4 million by 2036. As our society ages, the demand for specialized long-term care will only intensify.

In response to these challenges, Hillel Lodge has been proactive in enhancing our care offerings, particularly for those with dementia. In 2023, we launched the Java Memory Care program, a cutting-edge initiative designed to support residents with late-stage dementia or Alzheimer's through person-centred emotional care. This program is part of our broader commitment to innovative care models that respect the dignity and individuality of each resident.

Furthermore, our Therapeutics Department received a significant enhancement this year, thanks to a heartfelt donation from the Ottawa Community Foundation in memory of Marsha Magidson Z"L.

This funding has allowed us to expand our therapeutic facilities, offering a tranquil space with garden views that supports the independence and well-being of our residents.

Another key initiative, Companionship Connections, aims to combat loneliness among our residents. Funded by Biking for Bubbies, this program targets those experiencing depression or social isolation, providing tailored one-on-one engagements that significantly improve their quality of life.

The construction of our new Dream Garden, set to open this summer, is another milestone for Hillel Lodge. Made possible by generous community donations, this garden will serve as a vibrant outdoor space where residents can engage with nature and enjoy social interactions, crucial for their mental and physical health.

As we look ahead, I am excited to continue our continued collaboration with the Ottawa Jewish Community, our dedicated staff, and all stakeholders to further our mission of excellence. We are deeply grateful to our donors and our Board of Directors, whose unwavering support and vision empower us to set new standards in care. Together, we are committed to ensuring that Hillel Lodge remains a beacon of innovation and compassion in long-term care.

Thank you for being part of this journey with us, and for your continued partnership in caring for our community's most vulnerable.



THE AUXILIARY OF HILLEL LODGE

The Auxiliary is a very dedicated volunteer group and its members work hard year-round to raise much needed funds for the Lodge.

The Auxiliary started when Hillel Lodge was founded in 1965. The Auxiliary founding president set out to establish a committed group of volunteers who would (and still do) donate their time to enhance the quality of life for Lodge residents.

Functioning autonomously, the Auxiliary provides services and raises the money required to help bring the many important extras that bring comfort and enjoyment including the purchase and maintenance of several fish tanks, monthly birthday parties, musical entertainment, and bingo winnings.



“The Auxiliary raises funds through their Annual Spring Telethon and the Fall Great Games Event.”

The Auxiliary participates in major projects each year such as, new mattresses, bed lifts, furniture, and support in funding the new Dream Garden. This energetic group has helped celebrate holidays such as Sukkot, Chanukah, and Purim with residents.



2023/24 SPECIAL AWARDS

SHALOM PEREL PRESIDENT'S AWARD OF MERIT

The Shalom Perel President's Award of Merit is given annually to recognize an individual who works diligently, often behind the scenes to benefit the Lodge and the residents. The recipient is someone who makes an outstanding contribution to Hillel Lodge.

This president's award of merit is named in honour of Shalom Perel of blessed memory. Mr. Perel was born in Russia and when he was 8 years old, he along with his parents and 3 siblings immigrated to Montreal. In his 20's he moved to Ottawa and attended the University of Ottawa. Subsequently, he found employment in the federal government as a statistician where he worked until his retirement.

He was a quiet unassuming gentleman who enjoyed reading as well as classical music. Mr. Perel moved to Hillel lodge in October 1997. He passed away July of 1998. To show his appreciation for the care and attention he received at the lodge, he endowed the lodge with almost the entirety of his considerable estate. This magnificent gift was accompanied by Shalom Perel's desire to make things better for the residents who lived at Hillel Lodge.

SHALOM PEREL PRESIDENT'S AWARD OF MERIT

MESSAGE FROM AWARD WINNER JOY MENDER

I was really caught by surprise when announced that I had won this award. I am used to working in the background and not in the spotlight. Hillel Lodge holds a very special spot in my heart. My Bubby resided at Hillel Lodge's first location on Wurtemberg St. and I have fond memories of visiting her there. Later my mother and mother-in-law took up residence at Hillel Lodge and my father was a volunteer for Bingo and bringing the residents down to Synagogue for Saturday morning services. When Joel Diener and my late husband Seymour Mender initiated Biking for Bubbies 16 years ago, I simply helped fundraise and rode. When Seymour passed away in 2020, I joined the Biking for Bubbies Committee. Our daughter Jess has now joined the same board that Seymour led. 10 years ago Seymour won this same award!

Working closely together with Joel Diener, I took on a very active role to create and fundraise for the 2021 book "Hillel Lodge Biking for Bubbies - A Tribute book to Seymour Mender". Due to the great fundraising success of that book, the committee decided to produce another book the following year: "Hillel Lodge - 58 years of Caring in the Community". All these endeavours were a success due to a great team effort! I am very fortunate to be part of a team of individuals that are so passionate about supporting our Jewish community long-term care home.



SARAH LITHWICK GREEN AWARD

Sarah Lithwick Green was a true pioneer. Her legacy of compassion, advocacy and service continue to inspire us all. The award is given annually to a young person who demonstrates Sarah Lithwick's leadership and civic engagement. The winner reflects the values through which Sarah Lithwick Green enriched her community.

SARAH LITHWICK GREEN AWARD

MESSAGE FROM AWARD WINNER ELIYA READ

When attending OJCS we visited Hillel Lodge on many occasions, we would sing Shabbat prayers, play bingo, and cards, do coloring, and share important moments with the residents. My favorite visits were the one-on-ones. Every time we visited, we got to see just how much these visits meant to them, the joy that spread across their faces when we were playing cards or singing songs. When I received this award, I was extremely pleased and was greatly appreciative. I want to thank the people who selected me for award. It's such a great initiative and I hope it continues to get people excited about connecting with the elderly and wanting to help in their community.



2023/24 SPECIAL AWARDS

THELMA STEINMAN DIRECT SERVICE AWARD

This award is named after Thelma Steinman of Blessed Memory who was held in the highest esteem by our residents, staff and board members for her ability to give of herself and do the utmost to help others. As everyone who knew her can attest, she was a woman who exhibited tremendous warmth, energy, compassion and a marvellous sense of humour. Her ability to relate to people and to make them seem so special was especially evidenced in her interaction with the residents of Hillel Lodge.

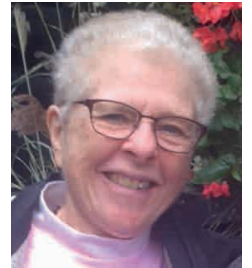
The Thelma Steinman Direct Service Award is given in Honour of an individual who interacts directly with the residents in order to improve their quality of life -- a person who as a result of his/her direct efforts makes a significant difference.

THELMA STEINMAN DIRECT SERVICE AWARD

MESSAGE FROM AWARD WINNER EVELYN MONSON

What an honour to receive this award, though my comment to Marilyn after reading Mr. Farrow's letter was, "You really think I deserve an award for all the fun I'm having???" As a retired senior, I don't want to be entertained, I want to be useful. I started volunteering after my husband died. At that time I was aware of crafters making mats out of milkbags following the disastrous earthquake in Haiti and learned that The Good Companions had a program every Tuesday. I even had a helper. One of the residents at Hillel Lodge routinely collected milkbags from all the kitchens and prepared them for me.

After my 101-year-old mother died at the Lodge four years later, I told Marilyn I would be happy to help out with Friday bingo if I could hand out the winnings. If something I say or do puts a smile on someone's face, then I'm happy. And what could be better than handing out loonies! One of my friends got such a kick out of my stories that she added the Lodge to her own volunteer activities! I like to think my mother z"l, who was a happy volunteer, is smiling down on me today. My favorite quote is something I came across many years ago: "Keep your sense of humour. Give away your smile."



THE OUTSTANDING SERVICE AWARD

The Outstanding Service Award is presented periodically to a group for outstanding service to Hillel Lodge. Recipients have included community groups, non-profit and for-profit companies and organizations that have made a significant contribution to Hillel Lodge and its residents.

THE OUTSTANDING SERVICE AWARD

MESSAGE FROM AWARD WINNER HOWARD KAPLAN AND KEEP ON SINGING

What an honor for us to win this award! Our group has been performing for the Hillel Lodge residents for many years now. Keep on Singing is made up of myself on guitar and lead vocals, Debbie Rubin on banjo and vocals, Al Garman on Bass, and Alison James on piano. We do it because we get great support from all staff at Hillel Lodge, and are grateful to all, and specifically to Marilyn who is always so wonderful. The power that music has is incredible! We play a wide variety of music from the 40s to 70s including all genres such as Hebrew music, rock & roll, folk, swing, Caribbean music, and Irish music.

Can feel the residents going down memory lane as they sign along to the tunes or as they simply sit and enjoy the performance. Our goal is to always give the residents the best performance possible. And our reward is to see how much they appreciate the show!



RESIDENT SPOTLIGHT

MORRIS SCHACHNOW- AN INSPIRING JOURNEY

Morris Schachnow is widely known in the Jewish community. Many have crossed paths with him during his many years participating in Jewish sports leagues or through the various organizations he volunteered at as a board member or recently as a resident and ambassador of Hillel Lodge. The dedication he applies to all he does is an inspiration to all of us who have had the chance to know him.

OTTAWA JEWISH SPORTS LEGEND

"Ottawa Jewish Sports Hall of Fame member Morris Schachnow is a long-time Ottawan. Morris was born in Vienna but spent most of his youth in New York City where he was a baseball phenomenon. Signed to a minor league contract by the New York Yankees, Morris played in Missouri where he roomed with future hall of famer Tony Kubek.

After his professional baseball career was cut short by a hereditary knee ailment, Morris married Shelley Mayberger and the couple settled in Ottawa where he was a champion in basketball, softball, and handball. Morris won the city handball championship an incredible 10 years in a row.

Some have called Morris Schachnow Ottawa's greatest Jewish athlete ever. There is little question that he was Ottawa's Jewish athlete of the sixties, winning the J.C.C. Sportsman of the Year award in 1965 and 1966 (the only years the trophies were ever awarded). Schachnow was a triple threat, the class of the field in softball, basketball, and handball. He received dozens of awards and other memorabilia that attest to his numerous accomplishments."¹



(From left) Morris Schachnow, Irving Shapiro and Joe Zelikovitz at the 1987 Jewish Community Centre Sports Award Dinner. (Photo courtesy of the Ottawa Jewish Archives)



HELPING THE JEWISH COMMUNITY

Morris Schachnow has always dedicated time to community work. In addition to years devoted to the J.C.C, Morris was President of the Congregation Beth Shalom in the 80s. Morris was also an active member of the Board of Directors of Hillel Lodge from 1980-83 and now, 40 years later, he is again a member of the Board of Directors of Hillel Lodge.

Morris and his wife Shelley first started volunteering at Hillel Lodge 20 years ago. Hillel Lodge is now home to both.

Morris is a very active resident and jokingly calls himself a double agent. As he sits on the Board of Directors and on the Resident's Council, he has first-hand information and can offer a distinct point of view on current issues happening at the Lodge.

Morris is also a great ambassador for the Lodge. He usually is the first face newcomers see. He makes it a point to personally greet new residents, making them feel welcome in their new environment.



From top left to right: Percy (dog), Ken (son), Taylor (granddaughter), Samantha (granddaughter in law), Josh (grandson), Charles (son), bottom left to right: Chevy (dog), Morris and Shelley (wife).

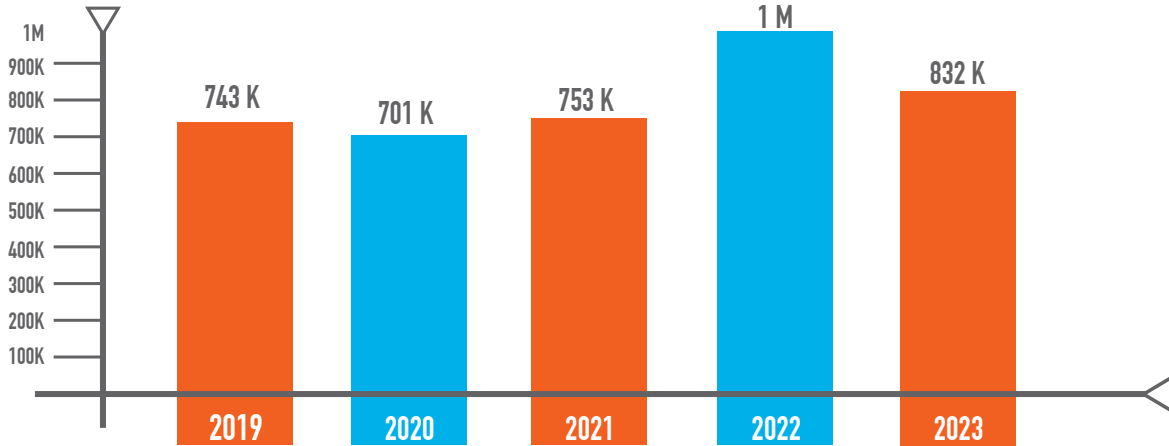
"I know it's hard for someone to leave behind their home and come to Hillel Lodge. I am there greeting them, most times in Yiddish, hoping to make the transition a little easier for them", explains Morris.

¹ Excerpts taken from articles by journalist Ian Sadinsky written for the Ottawa Jewish Historical Society and for SIR.

FINANCIAL SNAPSHOT 2023

At Hillel Lodge Long-Term Care Foundation we recognize that you are giving through us to make a difference in the lives of those in our care, both now and in the future.

Funds transferred from Hillel Lodge LTC Foundation to Hillel Lodge in the last 5 years.

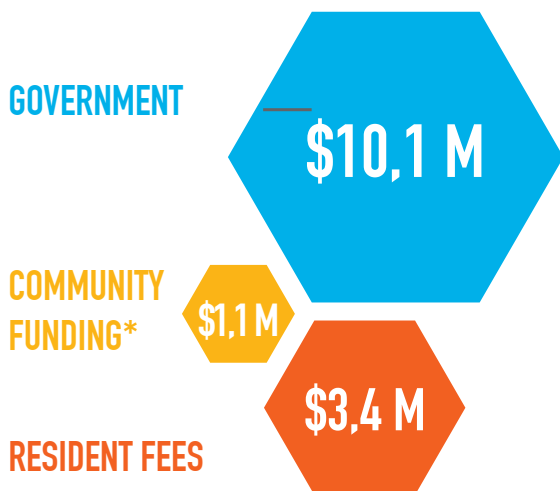


Thank you to our Donors and Endowment Fund holders.

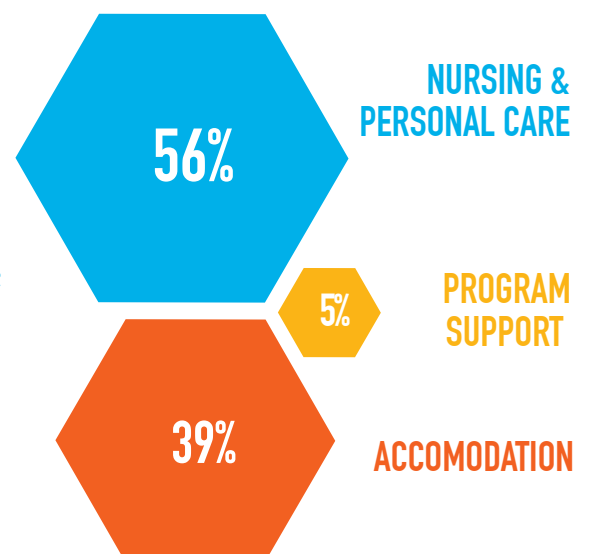
Foundation's full 2023 Financial Statements at <https://hillel-ltc.com/foundation/about-1/audited-statements>

At the Bess and Moe Greenberg Family Hillel Lodge, we are firmly committed to being accountable and good stewards of funds entrusted to us. We consider the management of those resources a duty, and we use them wisely and effectively.

SOURCES OF REVENUE



OPERATING EXPENSES



*Community Funding is your support. You ensured that residents were provided with a higher level of care. You put smiles on their faces and made a positive difference in their lives. Thank you.

Visit hillel-ltc.com/news for the full 2023 Financial Statements

2023 HIGHLIGHTS

*“Every idea starts in the imagination,
everything starts with a dream.”*

DREAM GARDEN

The beautiful new Dream Garden was constructed in 2023, thanks to generous community donations.

The Dream Garden is a place where residents and family members can gather and socialize while interacting with nature, participate in our horticultural program, or just be alone and experience the sounds, scents, and feelings of the garden.

To some of the residents, the garden is the only outdoor space they have access to, making this green space crucial for healthy living.

This project is a testament to our community's commitment to enhancing the quality of life for our cherished residents.

*“The new Dream Garden is a space that will
bring joy and tranquillity to our residents.”*



HEALTH BENEFITS OF OUTDOOR SPACES

Evidence continues to mount of the significant health benefits associated with spending time regularly in gardens and other green spaces, particularly for residents of long-term care facilities. Gardens can alleviate isolation, for instance, as they often become social centres enjoyed by residents, families, and staff alike. Gardening activities can decrease anxiety and inspire a sense of purpose.



DREAM GARDEN DONORS

As we reflect on the 2023, we are filled with gratitude for the generous individuals and families who have contributed to our Dream Garden. This beautiful space is more than just a garden; it is a sanctuary of hope, healing, and connection, embodying the Jewish values of tikkun olam (repairing the world) and chesed (loving-kindness). The Dream Garden serves as a living testament to the spirit of community that defines Hillel Lodge. Your support has transformed this vision into reality, providing a serene environment where our residents can find joy, solace, and a deepened connection to nature and one another. Thank you for being an essential part of this journey.

In Loving Memory of Bess & Moe Greenberg
by Elissa (Greenberg) & Avraham Iny

The Auxiliary of Hillel Lodge

In Memory of Barry Baker. From your Loving Wife,
Children, Grandchildren, Brother and Family

Irving & Beverly Swedko and Family

Stephen & Jocelyne Greenberg Family Foundation

Trinity Development Foundation

The Viner Family: Gary & Debra, Robert & Jenny Freeman,
Norman & Margo, Susan & Gillie Vered

In Loving Memory of: Evelyn & Norman Potechin, Sally & Max Taller,
Miriam & Harold Gordon from
the Potechin & Gordon Families

Claire Bercovitch & Family in Memory of Irving

Gillie & Susan Vered and Elie & Sonya Vered

Joan & Russell Kronick

In Loving Memory of Max & Dorothy Lief

Maria & John Bassi and Family

In Memory of Polly Cohen & Cila Farber

Pat & Morris Neuman

Hillel Lodge LTC Home of Ottawa 2023/2024
Board of Directors

The Shabinsky Family

Malcolm & Vera Glube and Family

Levinson Family Foundation

McGahan Family

Philip & Lynn Zunder and Family

Dr Howard & Evelyn Silverman,
in Loving Memory of Bill Silverman

Stephen & Gail Victor and Family

Barbara & Len Farber and Family

Julian And Elizabeth Szirtes
For Their Love Of Life And Each Other
THE SZIRTES FAMILY

In Loving Memory of Judge Jacie
& Jeanne Horwitz by Betsy Horwitz

In Loving Memory of our Parents Jack & Tania Firestone and
Irving Bercovitch By Sam & Susan Firestone and Family

Alan, Robert, Roger Greenberg & Families

Lawrence Soloway and Family

Urbandale Corporation

In Memory of Sara & Hugh Shabsove
and Rochelle Greenberg Loving Son and Brother...
Chuck Shabsove

Sol & Zelaine Shinder

In Memory of Gladys "Gital" Greenberg by her
Loving Husband John Greenberg and Family

Zinati Realty

Philip Firestone & Susan Caplan-Firestone

Bob & Lindsay Firestone and Family

Ida Firestone in Memory of Jack & Tania Firestone

In Memory of Bill & Phyllis Leith from the Arnold Kimmel
& Larry Hartman Families

Barbara & Steve Levinson

Tani & Gregory Sanders

Debbie & David Weinstein and Family

The Hymes Family

Kelly Funeral Homes by Arbor Memorial

Cohen & Lord Insurance Fund

Arthur J. Gallagher Canada Limited

John-David (J.D.) Lees

Jason & Jenny Shinder

2023 HIGHLIGHTS

BIKING FOR BUBBIES, sponsored by MediSystems



Our annual event, Biking for Bubbies, is special in our hearts as it embodies the true spirit of community and compassion. Bikers, walkers, sponsors, cheerleaders, and volunteers come together to honour and support our loved ones, and to make the event the success that it is.

2023 marked 15 incredible years for Biking for Bubbies. This extraordinary event brings the community together for one fantastic day each September. Biking for Bubbies funds support the Mealtime Assistance and Companionship Connections programs which aim to combat loneliness among our residents and provide tailored one-on-one engagements that significantly improve their quality of life. Biking for Bubbies has raised more than a million dollars since its inception 15 years ago.

THERAPEUTIC ROOM

Therapeutics Department received a significant enhancement in 2023, thanks to heartfelt donations in memory of Marsha Magidson Z "L.

This funding has allowed us to expand our therapeutic facilities, offering a tranquil space with garden views that supports the independence and well-being of our residents. This therapeutic space is a testament to the transformative power of love and remembrance.





THANK YOU to everyone who helped make the 15th Annual Biking for Bubbies, sponsored by Medi Systems, a success.

A SPECIAL THANK YOU to the bikers for helping to make the lives of the Bess and Moe Greenberg Family Hillel Lodge residents vibrant and fulfilling.

Team Appotive
Morry Attias
Team Baker
Team Barbie
Heather Jenkin
And Debbie Rosenblatt
Marty Black
Glenda Blacker
Jon Blakey
Mark Borts
Aaron Bottner
Brian Boucher
Adam Cantor
David Clarke
Penny Cohen
Robin Conway

Team Wheelie Fast
Doron Danan
Joel Diener
Ross Diener
Janet Dollin
Jim And Debbie Farrow
Josh Finn
Paul Finn Sam
And Susan Firestone
Alejandro Fizman
Jonathan Freedman
Freeman Family
Dale Fyman Ben Gailor
Sandy Goldberg
And John Jussup
Gustave Goldmann

Riding For Mom
Roger Greenberg
Issie Hoffman K"z
Jonathan Katz
Irwin Kreisman
Michael Landau Steve
And Hildy Lesh Lewis
Levin Patrick McGarry
Mender Family
Sye Mincoff
Hillel Lodge
Adventures
Team Ostrega
Karen Palayew
Jeff Pleet
Micah Potechin
Oren Potechin
Harry Prizant Sharon
And Sol Reichstein
Lewis Retik
Eytan Rip
Noah Mayman
And Kevin Rodkin
Frank And Margo Rosen

Schachnow Family
Adam Schacter
Harold Schwartz
Shari Silber
Peter Stelcner
Rabbi Levy Teitlebaum
Gary Viner
Bike Ride Fundraiser
Sandra Zagon
Zaret Family
Philip Zunder
Canadian Global
(Ottawa) Ltd



THE IMPACT OF ENDOWMENTS: ENRICHING LIFE AT HILLEL LODGE

We are deeply grateful for the generous endowments that help us create a vibrant and supportive environment for our residents. These contributions are not just financial gifts; they are investments in the lives of individuals who call Hillel Lodge home. This year, we want to highlight some key areas where endowment gifts have made a profound difference: the Café, our recreation programs, and art therapy.

The Café: A Welcoming Hub of Connection

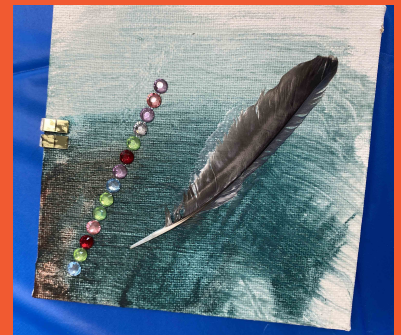
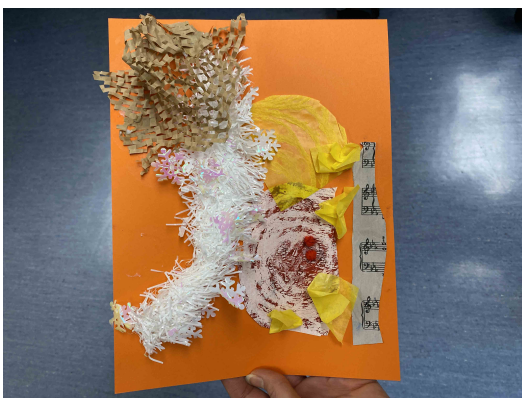
The recently renovated and reopened Café has transformed into a vibrant gathering space for residents, families, and community members. It's more than just a place to grab a bite to eat; it serves as a social hub where relationships can flourish. The atmosphere is filled with laughter, conversation, and the aroma of freshly brewed coffee and homemade muffins, creating a warm and inviting environment.

In this space, residents can enjoy meals and snacks with their loved ones, fostering connections that are essential for emotional well-being. The Café also encourages community involvement, as family members and friends are inspired to join us for lunch, turning mealtime into a cherished experience. This sense of belonging is crucial for our residents, enhancing their quality of life. Keep your eye out for more changes in store!

Recreation Programs: Engaging and Enriching Lives

Endowment gifts have significantly enhanced our recreation department, allowing us to offer a variety of engaging activities designed to combat isolation and loneliness. These programs are essential for promoting physical, cognitive, and emotional well-being.

From exercise classes that encourage movement to game nights that spark joy and camaraderie, our recreation programs provide residents with opportunities to connect with one another and explore new interests. Regular participation not only promotes physical health but also fosters a sense of community and belonging. The smiles and laughter shared during these activities are a testament to the importance of engagement in our residents' lives.



Art Therapy: A Pathway to Expression and Healing

Another invaluable aspect of our programs, supported by endowment gifts, is regular art therapy sessions. Art therapy is a powerful tool that allows residents to express themselves creatively, fostering emotional healing and self-discovery. Through painting, drawing, and other artistic endeavors, residents can articulate feelings that may be difficult to express in words.

This therapeutic outlet promotes relaxation and joy while enhancing mental health and overall well-being. The pride and accomplishment that come from creating art enable residents to connect with their inner selves and share their unique stories. Art therapy not only enriches their lives but also serves as a reminder of the beauty and creativity that resides within each of us.

A Legacy of Compassion

The programs highlighted above demonstrate the profound impact that endowment gifts can have on the quality of life for our residents. They provide essential opportunities for connection, creativity, and community, ensuring that every individual feels valued, engaged, and cared for.

Please take pride in knowing that your thoughtful gifts are having a profound impact. Together, we are building a legacy of love and compassion that continues to enrich the lives of our residents for years to come.

Thank you for being a vital part of the Hillel Lodge family. By joining us in this effort, you help create a brighter, more connected community for all.

If you would like information on how you can create a named endowment or how to leave your personal legacy please contact foundation@hillel-ltc.com or call Leslie or Nicky at 613-728-3990



ENDOWMENT FUNDS

Abe and Bea Dubinsky Endowment Fund
Abe and Bertha Palmer Endowment Fund
Abe and Etta Morris Memorial Fund
Advanced Business Imaging Fund
Alan Freed Family Fund
Anna and Samuel Wex Family Fund
Anne and Arthur Silverman Family Fund
Archie and Lillian Taller Memorial Fund
Auxiliary of Hillel Lodge Fund
Barbara and Joel Diener Family Fund
Barry Hobin and Associates Architects Fund
Bella Altman Leikin Memorial Fund
Ben and Glee Shapiro Fund
Bill and Leona Adler Memorial Fund
Bill and Phyllis Leith Family Fund
Boris and Dolly Blacher Family Fund
CAPCORP Financial Fund
Carole and Norman Zagerman Family Fund
Chaim and Raja Miller Memorial Fund
Chuck and Malca Polowin Fund
Cindy Feingold and Roger Greenberg Fund
Cohen and Lord Insurance Fund
David and Debi Shore Family Fund
David and Ethel Malek Family Fund
David and Jutta (Netta) Silverman Family Fund
David, Harvey, Victor Kardish Family Fund
Dennis Newton Memorial Fund
Donald, Elaine and Amanda Whittemore Fam Fund
Dorothy and Maurie Karp Endowment Fund
Dr. Hyman and Dr. Sylvia Van Straten Kaufman Fund
Dr. Joseph and Devora Caytak Family Fund
Dr. Mark and Nina Dover Family Fund
Edith Goldschmidt-Oko Memorial Fund
Edith Teitelbaum and Eddie Zinman Memorial Fund
Elliot and Helen Marshall Family Endowment Fund
Elsie Baker Endowment Fund
Eric Weiner and Arlene Godfrey Family Fund
Esther Ages Memorial Fund
Ethel and Irving Taylor Family Fund
Eudice Garmaise Endowment Fund
Evacuchek By Encore Safety Inc. Fund
Evelyn and Irving Greenberg Fund
Evelyn and Isadore Hoffman Family Fund
Farrand and Joyce Miller Endowment Fund
Festinger/Kelman Family Fund
Fradel and Simon Sternic Memorial Fund
Frank and Lily Hoffenberg Family Fund
Fred and Esther Ballon Family Fund
Friedberg and Dale Families Fund
George Joseph Cooper Memorial Fund

Ghita and Frank Wolff Endowment Fund
Gina and Howard Grant Family Fund
Gowlings Fund
Gunner Family Fund
Hanoch and Felicia Sharon Family Fund
Harold and Lillian Shoihet Memorial Fund
Harry Torontow Family Fund
Ida and Sidney Lithwick Fund
Irma and Harold Sachs Family Fund
Jack and Betty Ballon Family Fund
Jacob and Abiga Kingson Family Fund
Jane Ellens and Dan Pearlman Fund
Jean and Samuel Akerman Memorial Fund
Jeannette and Alden Hallett Family Fund
Jeffrey B Isenberg Memorial Fund
Jenny and Murray Citron Fund
Joan and Russell Kronick Family Fund
Joel and Sharon Edelson Family Fund
Joseph and Inez Zelikovitz Endowment Fund
Joseph Ginsberg Family Endowment Fund
Kassirer Fund
Ken and Leah Miller Family Fund
Label and Leona Silver Family Fund
Levin Family Fund
Linda and Stanley Shiff Family Fund
Lipsky Cracower Family Fund
Lithwick Chapel Fund
Louis and Diane Tannenbaum Family Fund
Malcolm and Vera Glube Fund
Marcia and Stephen Aronson Family Fund
Martin and Thea Ginsburg Memorial Fund
Max and Dorothy Liefv Endowment Fund
Medico-Dental Pharmacy of Ottawa Ltd Fund
Milton and Mary (Terry) Viner Family Fund
Moe Greenberg and Elissa Greenberg Iny Family Fund
Monica and Alvin Stein Family Fund
Morris and Lillian Kimmel Family Fund
Morton and Sylvia Pleet Family Fund
Nell Gluck Memorial Fund
Nordau and Roslyn Kanigsberg Family Fund
Norman and Gert Leyton Family Fund
Pearl and Samuel Lepofsky Memorial Fund
Pencer Family Fund
Ratner/Levine Family Fund
Remy Albagli Memorial Fund
Renah (Gertchuck) Davies Fund
Rhoda and Marvin Shabinsky Fund
Rosenthal/McCormack Family Fund
Roslyn and Lee Raskin Family Fund
Roslyn and Myles Taller Family Fund

Ruth and Irving Aaron Family Fund
Sally and Morton Taller Family Fund
Salvatore Nessim and Marie (Catran) Albagli Memorial Fund
Sam and Dora Litwack Family Fund
Sam and Ruth Rothman Memorial Fund
Sarah and Arnie Swedler Family Fund
Sarah Lithwick Green and Murray Sidney Green Family Fund
Sarah Lithwick Green Service Award Fund
Schachter/Ingber Family Fund
Schacter Fund
Shelley and Sidney Rothman Family Fund
Shirley and Al Cohen Family Fund
Shirley and Maurice Rose Memorial Fund
Shmuel and Malka Feig Family Fund
Sid and Barbara Cohen Family Fund
Skulsky Family Memorial Fund
Sonia Rawicki Agulnik Music Therapy Fund
Stella and Norman Beck Family Fund
Stella and Norman Torontow Family Fund
Stephen and Debra Schneiderman Family Fund
Sternberg/Jacobsen Family Fund
Sydney and Ethel Hartman Fund
Sylvia and Ben Wiesenfeld Fund
Sylvia Goldblatt Memorial Fund
Tania Firestone Family Fund
Toby and Joel Yan Family Fund
Vera and Leslie Klein Family Fund

Join Us in Supporting Hillel Lodge: Your Gift Matters!

At Hillel Lodge Long-Term Care Foundation, we believe in the power of community and the importance of caring for one another, rooted in our rich Jewish traditions of tzedakah (charity) and gemilut chasadim (acts of kindness). We invite you to be part of something truly special by supporting our residents and the vital programs that enhance their lives.

Make a Difference Today: Giving Opportunities

1. Monthly Giving Membership Drive

Become a valued member of our community! Your monthly contributions help us uphold our mission of care and compassion, ensuring sustainable support for our residents. Call Nicky at 613-728-3990 or visit hillel-ltc.com/foundation/ways-to-give.

2. Tribute Cards

Celebrate a special occasion or honor the memory of a loved one with a heartfelt donation. Tribute cards can be ordered easily at hillel-ltc.com/foundation/ways-to-give or by calling Nicky at 613-728-3990.

3. Hillel Lodge Endowment Funds

Join over 100 individuals who have established endowment funds. A contribution of \$1,000 or more creates a lasting legacy, ensuring ongoing care and support for our residents. Call Leslie at 613-680-1197 or LSher@hillel-ltc.com for more information.

4. Yahrzeit Plaques

Commemorate a loved one with a beautifully engraved brass Yahrzeit Plaque for a contribution of \$500. This plaque will be displayed on our Yahrzeit Board, honoring their memory and connecting them to our community. Call Nicky at 613-728-3990.

5. Tree of Life

Celebrate an extra special occasions or remember loved ones with an engraved brass leaf on our stunning Tree of Life, prominently located in our main lobby. Each leaf, available for \$2,500, represents a meaningful connection and legacy. Call the Foundation at 613-728-3990.

6. Biking for Bubbies

Join us each September for our exciting cycling event! Ride as little or as far as you wish in honor of our residents. Whether you choose to ride, volunteer, sponsor, or support a participant, your involvement makes a tangible difference!

7. Make a Donation Now

Every gift counts! Contact the Hillel Lodge LTC Foundation at 613-728-3990 or visit www.hillel-ltc.com to make a donation today. Your support funds crucial programs like Feeding Assistance, Recreation Therapeutics, Hillel Heroes (showing appreciation for our amazing staff), and Ritual programming.

8. Did You Know?

You can direct your United Way contributions to Hillel Lodge by indicating our charitable number: 86100 2459 RR0001.

9. Remember us in your will, life insurance policy, RRSP/RIFF

Consider making a lasting impact through a gift in your will, life insurance policy, or RRSP/RRIF. By including Hillel Lodge as a beneficiary, you help us continue our values of care and community for future generations. For more information, reach out to Leslie Sher at 613-680-1197 or LSher@hillel-ltc.com.

Don't forget to check if your employer matches donations.

Why Wait? Your Gift Matters!

Act now. Your generosity not only enriches the lives of our residents but also embodies the spirit of our Jewish community. Together, we can ensure that Hillel Lodge remains a place of warmth, compassion, and dignity for those we serve.

Thank You for Your Continued Support!

Every act of kindness makes a difference. Join us in our mission today!

THE FUTURE OF THE JEWISH COMMUNITY IS IN YOUR HANDS.



HOW WILL YOU ASSURE JEWISH TOMORROWS?

Join others and include a gift
to Hillel Lodge LTC Foundation in your will.



To create your legacy contact:

Leslie Sher, Executive Director, LSher@hillel-ltc.com 613.728.3990 www.hillel-ltc.com/foundation